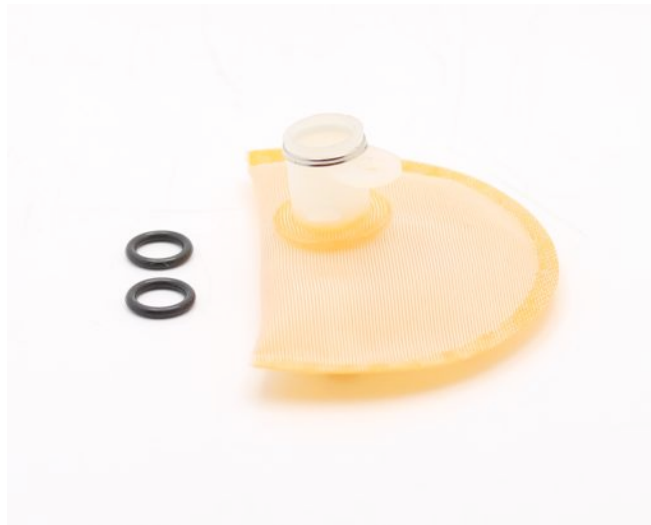


9-651-1018 2006-12 Commodore DW65c Fuel Pump Installation Guide



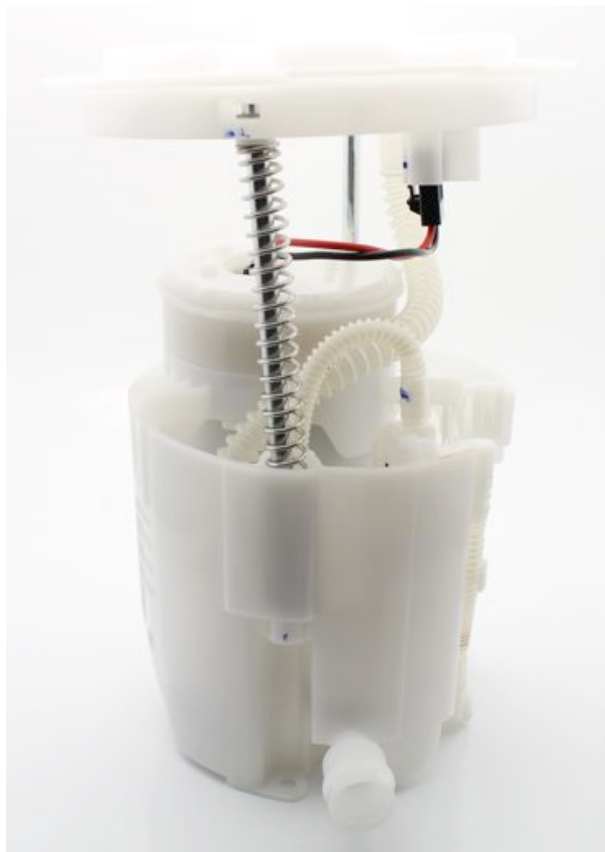
Parts List:

- DW65c, 9-651
- Fuel Sock
- 3-223 O-Rings (x2)
- Super Lube

GenIV Commodore DW65c Fuel Pump Install

PLEASE READ – this guide is intended to aid in the installation of our products. It is recommended that factory manuals or instructions are followed to remove the fuel pump assembly from the vehicle. Some instructions in this guide are generic. The factory manual should supersede any contradiction.

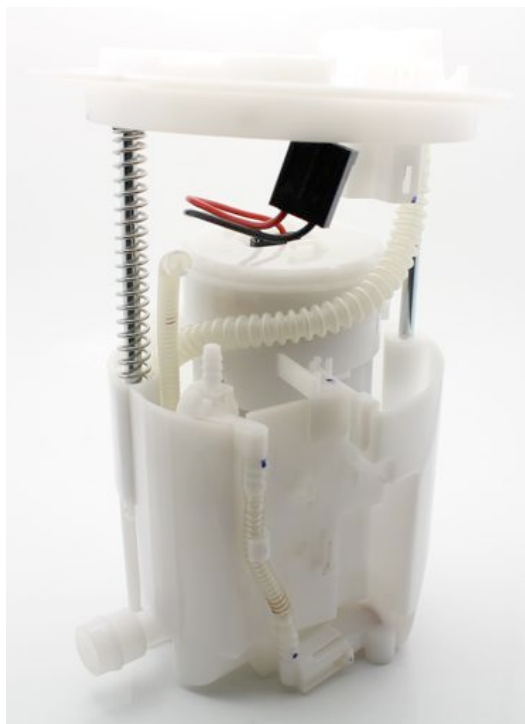
Below is a picture of suggested tools that will make the installation process easier.



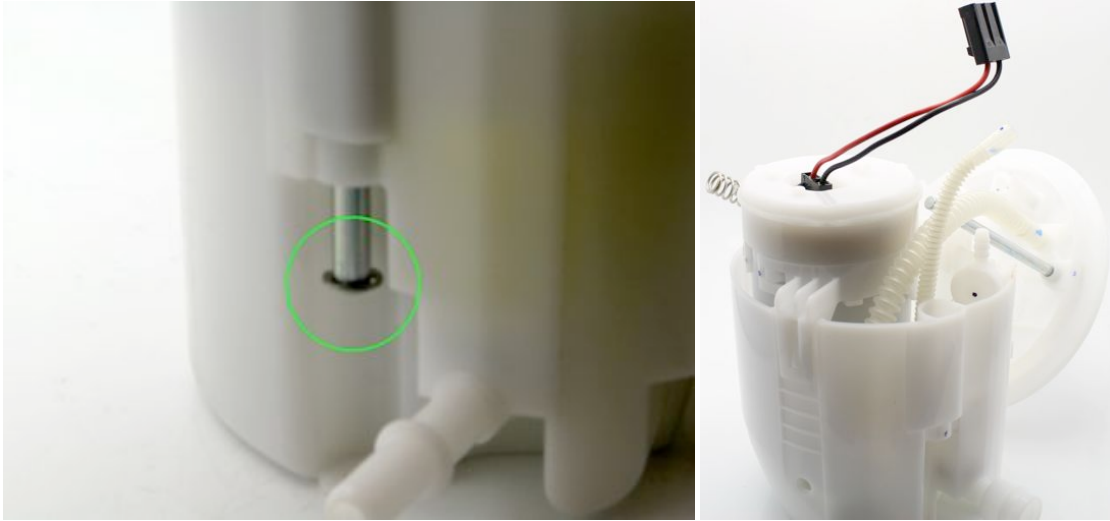
1 – cut the smaller plastic hose from the assembly



2 – disconnect the electrical connector for the pump from the hat of the assembly; it may also be easier to work with the assembly if the fuel level sensor is disconnected as shown in the pictures



3 – push the top down and remove the C-clip retainer from the sprung shaft and lift the hat up and away from the bucket assembly



4 – remove the center section from the bucket by lifting the 3 tabs (circled in green)



2006-12 Commodore DW65c Fuel Pump Installation Guide

5 – remove the pump by lifting the 3 tabs on the retainer/fuel sock and pull the pump out, then remove the electrical connector



6 – remove the OE grommet; if it is in useable condition install on the DW pump, this is the preferred installation. If the OE grommet is not in useable condition, install the 2 supplied orings on the DW as pictured on the right



7 – plug the electrical connector into the DW pump and install in the center section of the assembly

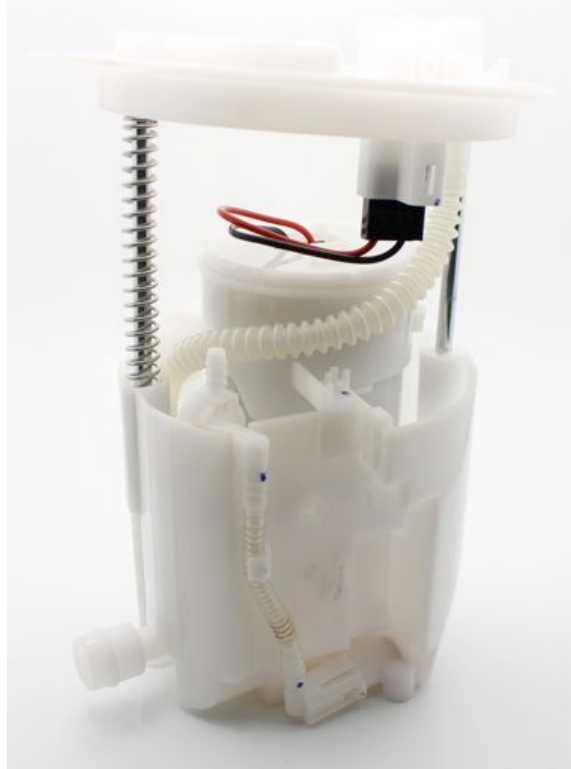


8 – install the center section back into the bucket



9 – slide the uprights of the hat back into position and install the C-clip, also plug the electrical connector into the hat and reinstall the fuel level sensor if it was removed

Note – the smaller hose that was cut during disassembly will not be reinstalled



10 – reinstall the assembly into the fuel tank and attach a length of hose to the outlet of the pump assembly allowing it to drain into a fuel safe container and prime the fuel pump assembly

11 – cycle the key to the on position as many times as required to prime the pump assembly and evacuate the air introduced during the pump installation process

12 – attach supply line to the outlet of the pump assembly